



QUICK GUIDE TO

AGOURA EQUESTRIAN CENTER CONNECTOR

SANTA MONICA MOUNTAINS NATIONAL RECREATION AREA

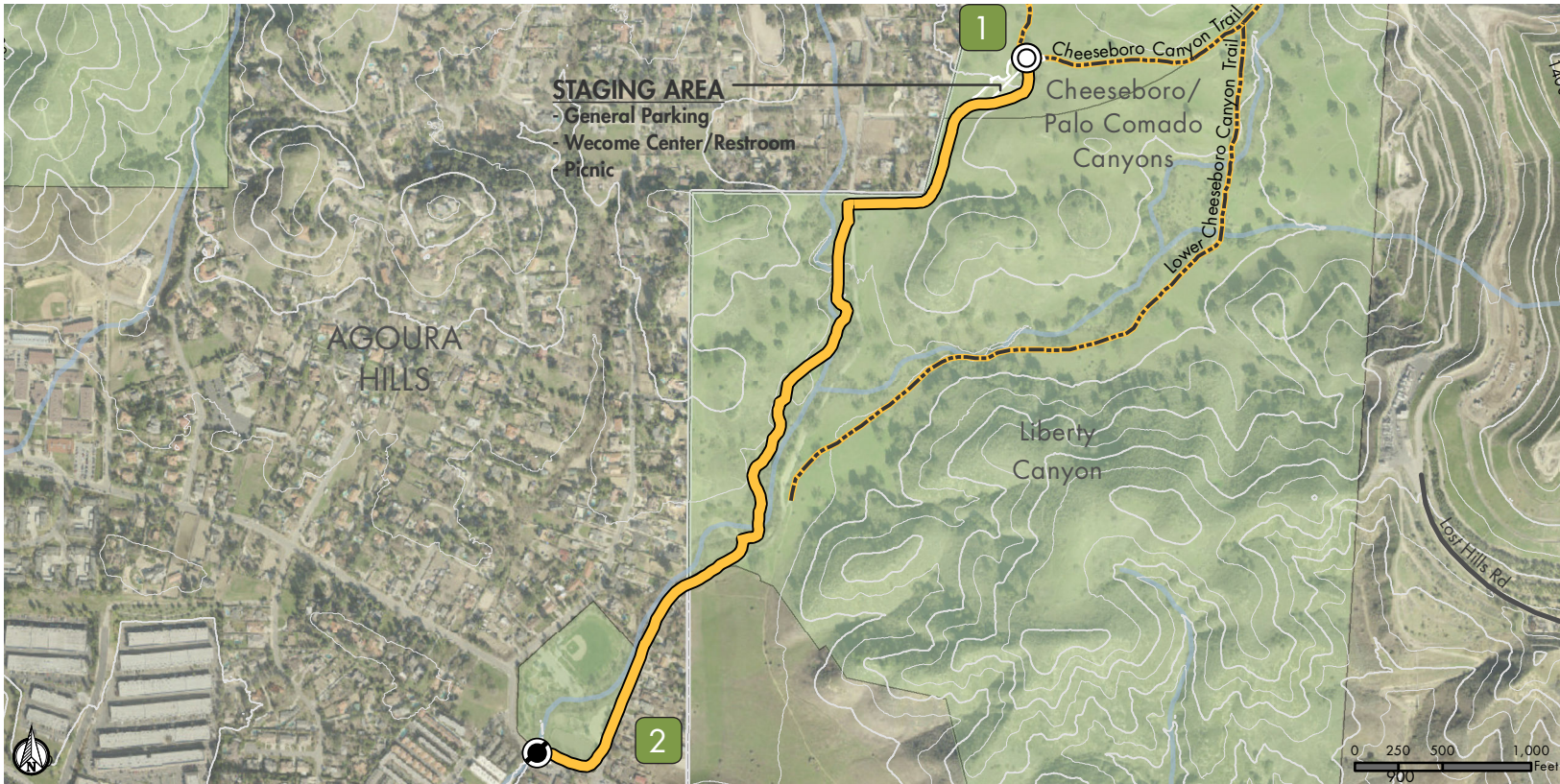


Quick Guide
courtesy of
County of
Los Angeles

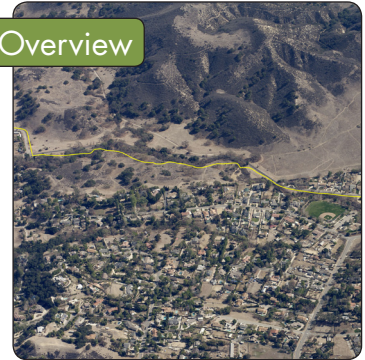
DESCRIPTION: This trail provides a great connection from the Old Agoura Park equestrian-friendly parking lot to the trails in Cheesebore Canyon. The trail heads north from the parking lot and then parallels Cheesebore Road through the oak woodland on the west side. The trail heads east, across Cheesebore Road, at the Cheesebore Canyon park entrance and continues on a trail next to the entrance road up to the inner, main parking lot.

DIRECTIONS: From the 101, take Cheesebore Road exit. Head north on Palo Comado Road, which comes to a 4-way stop at Cheesebore Rd. Old Agoura Park is straight across the intersection on the north side of the road. If heading to Cheesebore Canyon, turn right (north) at the 4-way stop intersection onto Cheesebore Road and travel one mile, then turn right at the Cheesebore Canyon Trailhead entrance.

Length: 1.09 miles
Elevation Gain: 105 feet



Overview



1



2

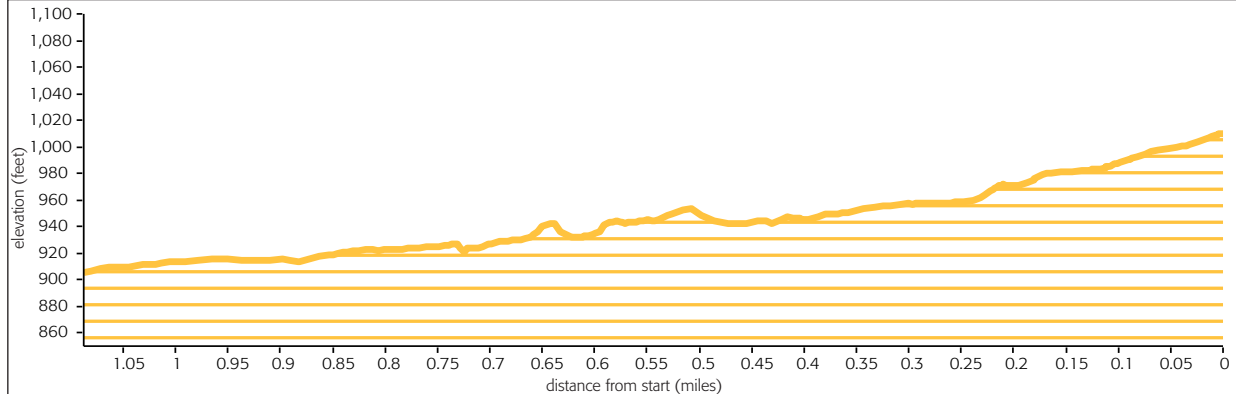


Access & Features

- Trailhead
- End of Public Trail

Trail Type

- Natural Trail



QUICKGUIDE INFORMATION

COURTESY OF THE COUNTY OF LOS ANGELES | DEPARTMENT OF PARKS AND RECREATION

SAFETY FIRST



In case of **EMERGENCY** dial 911.

For non-emergencies on County trails call the Los Angeles County Sheriff's Parks Bureau Dispatch at (800) 834-0064.

HAZARDS ON THE TRAIL



Rattlesnakes occasionally sun themselves in the middle of the trail. If encountered, keep your distance and allow space for the snake to retreat.



Poison oak can be identified by groups of 3 leaves going up the branch. It's best avoided by staying on the trail and wearing long pants and long-sleeved shirts to prevent contact with skin.



Ticks are most often found in shaded, grassy areas off the beaten path. Stick to established trails and wear long pants to avoid contact. Check for ticks frequently, especially the scalp, waist and other dark places where they can hide.

SHARE THE TRAIL



When trail conditions require a right of way for safe passage, **equestrian users have the primary right of way, hikers next and then mountain bikers**. When trail conditions allow and when there is width to safely pass, common courtesy should prevail for all users. Stand to one side of the trail and allow them to pass. When in a group, avoid blocking the trail. **Mountain bikers yield to all trail users**. Anticipate other trail users as you ride around corners. Mountain bikers traveling downhill must yield to all users, including other mountain bikers, headed uphill. In general, make each pass a safe and courteous one.

WHAT TO BRING

- ✓ Water for you and your animal(s)
- ✓ Trail map
- ✓ High energy snacks
- ✓ Waste bags for your dog
- ✓ First aid kit
- ✓ Extra clothing
- ✓ Sunglasses/hat
- ✓ Sunscreen
- ✓ Insect repellent
- ✓ Trekking poles (optional)
- ✓ Flashlight (optional)

ADDITIONAL RESOURCES

For information visit trails.lacounty.gov or any of our partners' websites at nps.gov, parks.ca.gov, smmc.ca.gov, lamountains.com, or rmc.ca.gov. Visitor Center for Santa Monica Mountains National Recreation Area, (805) 370-2300

MAP DISCLAIMER

This map was created for informational purposes only. Reasonable effort has been made to ensure the accuracy of the maps, images, and data provided; nevertheless, some information may not be accurate.